



# The supply of pelagic species in Latin America

---

Gonzalo Cáceres  
Commercial Director

# Who are we ?

World leading fishing company specialized in the production and export of high-quality marine ingredients and foods.

**Our purpose : To guarantee the nutrition of tomorrow**

Our assets :

23% of Anchovy Landings

48 vessels

1 refined and concentrated oil factory

9 steam dried and crude fish oil factories

1 human consumption factory

1 Shipyard

## WHAT SETS US APART?



We are the first global producer and exporter of fishmeal and fishoil (100% anchovy)



We belong to the BRECA GROUP



We control the access & quality of our raw material (anchovy)



Sustainability: IFFO – RS & Friend of the Sea (FOS) Certifications



TASA

# Our products



## Fish Meal

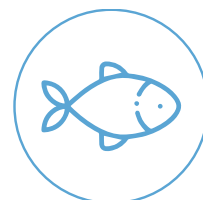
With great digestibility and percentage of proteins, minerals, and Omega 3. We produce more than 235,000 MT per year



## Fish Oil

We produce more than 40 thousand tons per year.

## ► Other activities



## Frozen Fish

One of the largest freezing plants in South-America. With a production capacity of 521 TN, and a storage capacity of 14,500 MT



## Shipyard

Design, construction, modification, maintenance and repair of vessels.

# Pelagic Supply Outlook

## Supply Latin America

Peru  
Chile  
Mexico  
Brazil  
Ecuador  
Argentina  
Venezuela  
Panama  
Belize  
Colombia  
Uruguay  
El Salvador  
Guyana  
Suriname  
Nicaragua  
Costa Rica  
Paraguay  
Haiti  
Cuba  
Honduras  
Guatemala  
Bolivia  
Dominican Republic  
French Guiana



### Top Species Caught in 2020

**1** Peruvian Anchovy  
4 896 Kton



**2** Chilean Jack Mackerel  
715 Kton



**3** Skipjack Tuna  
383 Kton



**4** Pacific Chub Mackerel  
363 Kton



**5** Pacific Thread Herring  
305 Kton



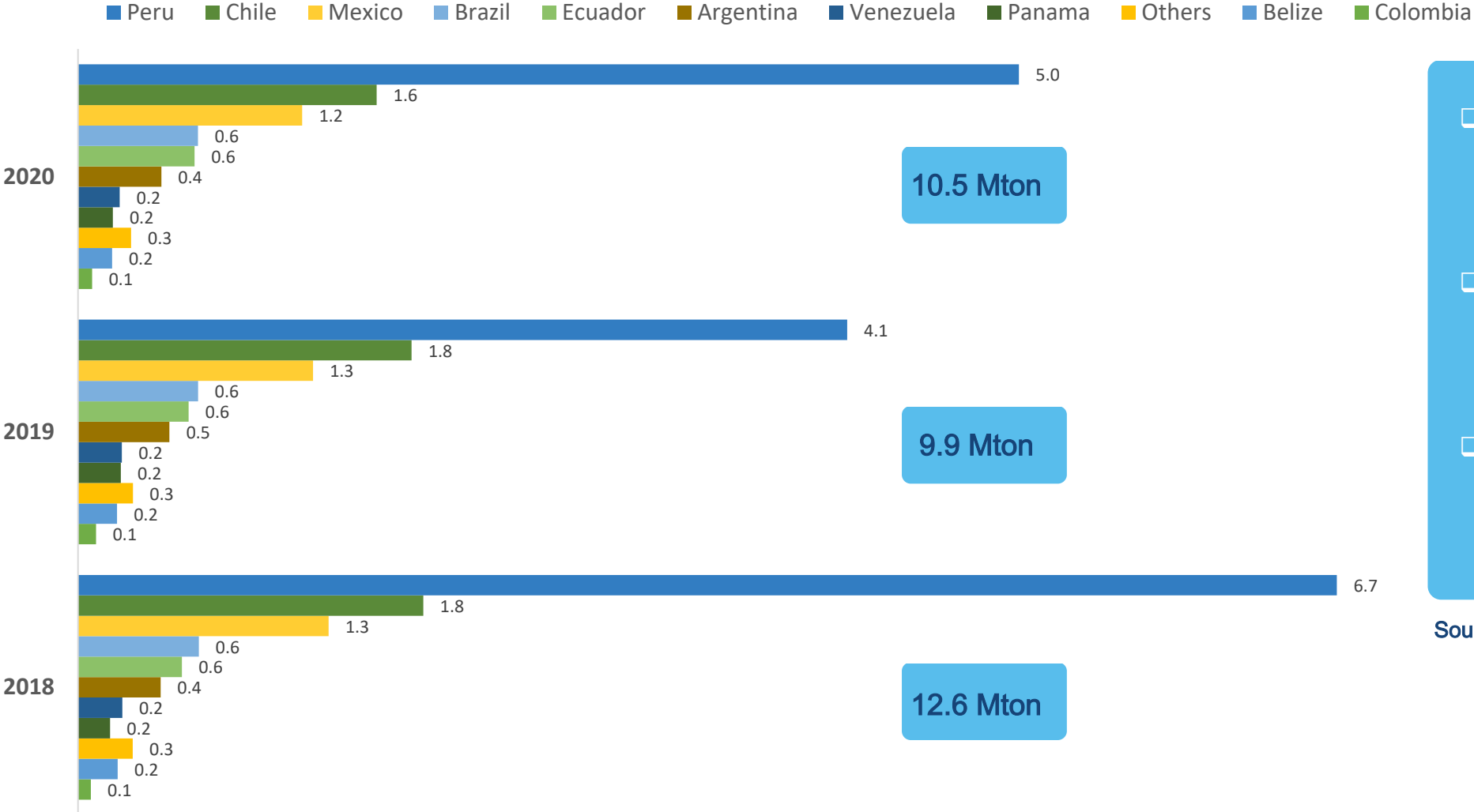
**6** Argentine Hake  
286 Kton



# Pelagic Supply Outlook

## Supply from Latin America

Catches in millions of tons



- Top countries per total catch are Peru (~50% of total), Chile (~16% of total), Mexico (~12% of total)
- ~ 70% of the pelagic supply is destined to indirect human consumption
- ~ 86% of Peru's pelagic supply is destined to indirect human consumption

Source : FAO, IFFO



# Pelagic Supply Outlook

Supply from Mexico



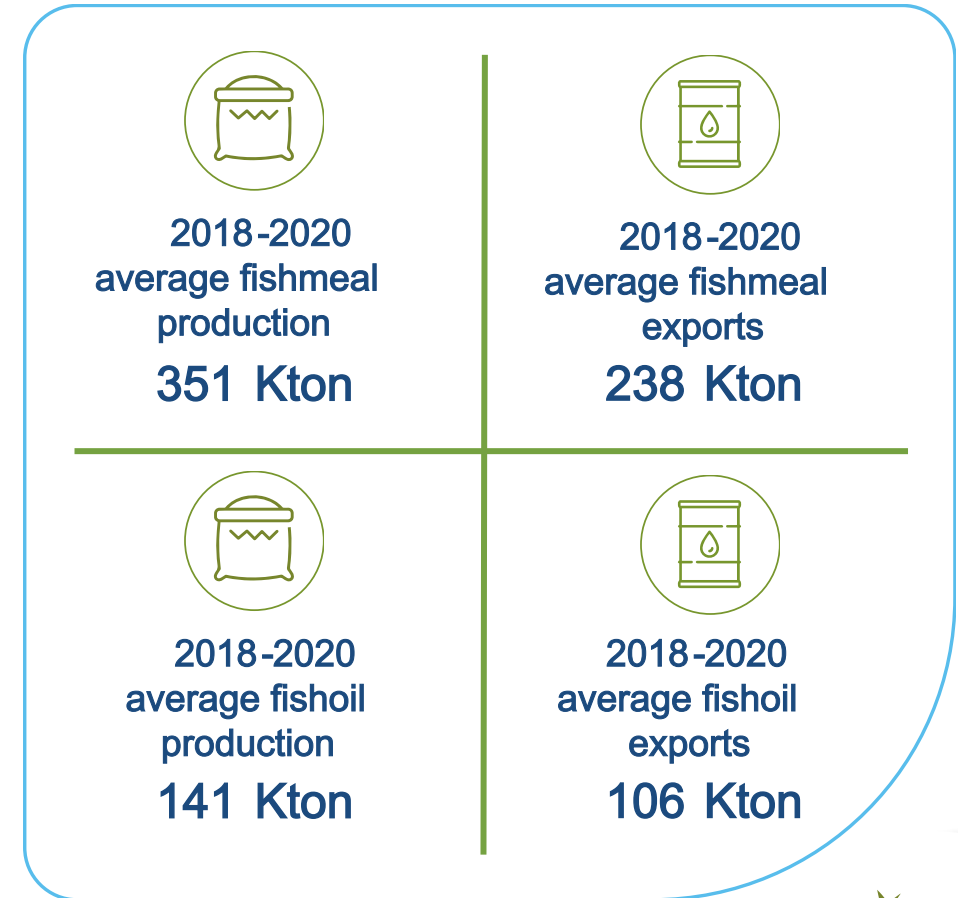
	Top species	2018-2020 average catch	% of total catch
1	Pacific thread herring	263 Kton	21%
2	Pacific sardine	131 Kton	10%
3	Yellowfin tuna	110 Kton	9%
4	Tilapia snail	104 Kton	8%

# Pelagic Supply Outlook

Supply from Chile



	Top species	2018-2020 average catch	% of total catch
1	Peruvian anchovy	699 Kton	40%
2	Chilean jack mackerel	489 Kton	28%
3	Araucanian herring	310 Kton	18%
4	Pacific chub mackerel	78 Kton	4%



Source : FAO, IFFO

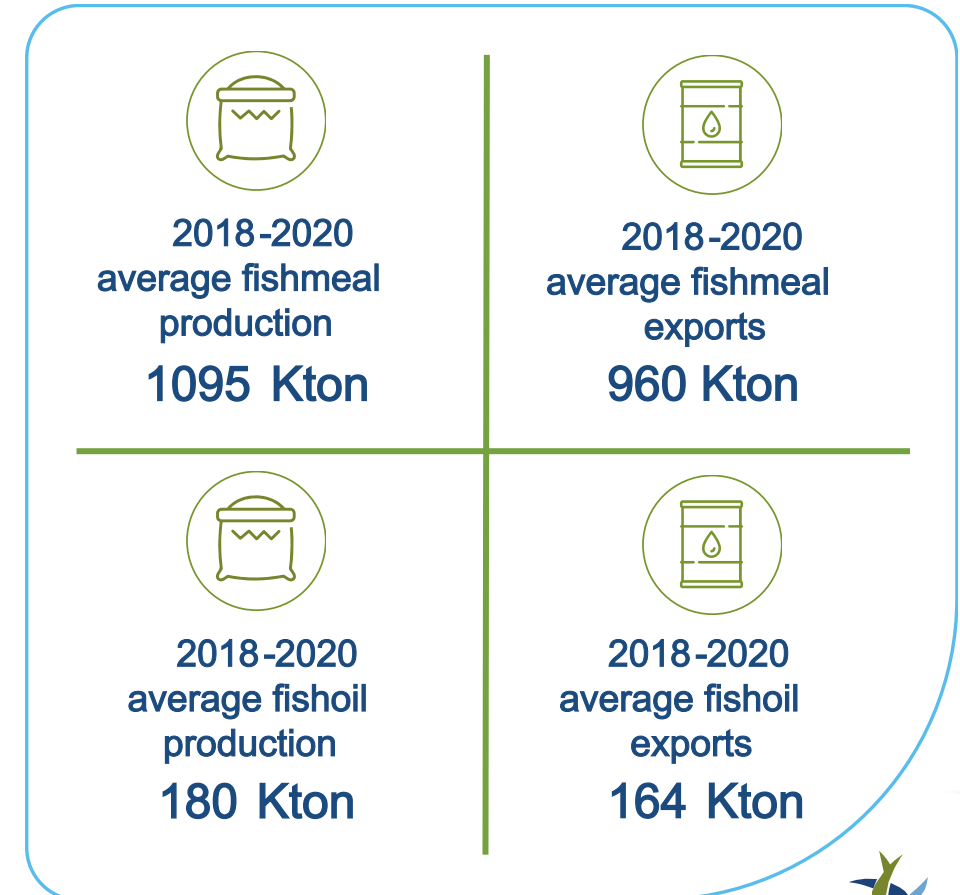
# Pelagic Supply Outlook

## Supply from Peru

The contribution of the fishing industry to Peru's economy

- 1.3% of GDP in average in the last 10 years
- 7% of the country's exports
- 700 000 direct and indirect jobs per year

	Top species	2018-2020 average catch	% of total catch
1	Peruvian anchovy	4 698 Kton	89%
2	Chilean jack mackerel	119 Kton	2%
3	Eastern Pacific bonito	96 Kton	1%
4	Pacific chub mackerel	75 Kton	1%



Source : FAO, IFFO  
<https://www.snp.org.pe/la>

-pesca -en -cifras/



# Key Facts regarding the Peruvian Anchovy

- ▶ The peruvian anchovy is an important source of micro nutrients not commonly found on everyday foods
- ▶ It is one of the main sources of Omega 3 fatty acids EPA and DHA
- ▶ Its biomass is resilient and has a great capacity of restoration throughout the year

## ▶ Composition :

71.1% - 75.31% Water

16.9 - 18.3% Protein

4.4 – 7.4% Fat

3.3 – 3.5% Ash

▶ Balanced Aminoacid profile

▶ > 30% Omega 3

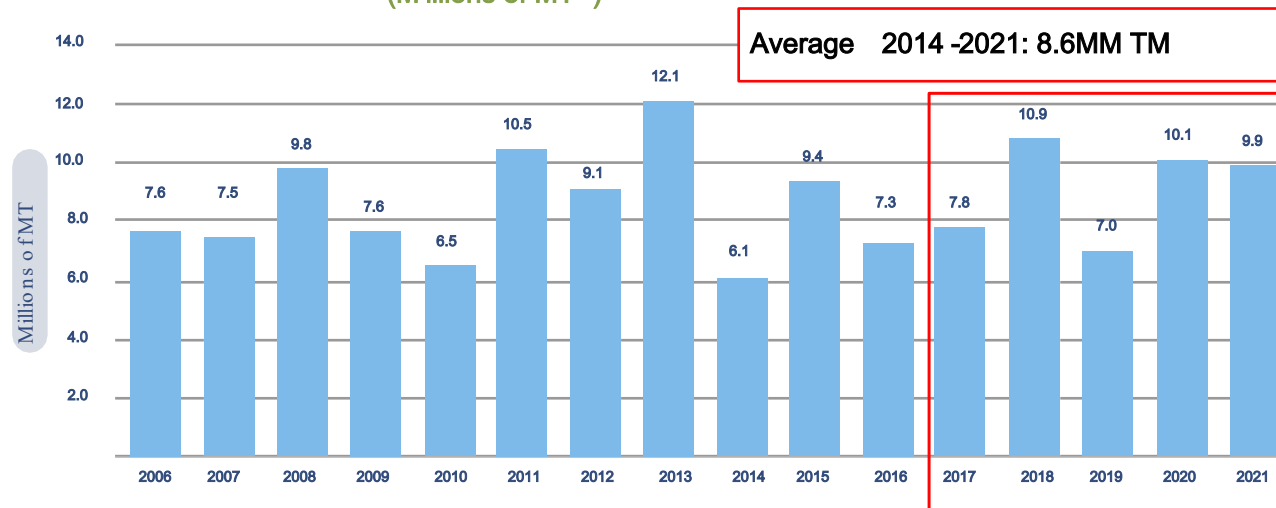




# Peru and the Peruvian Anchovy

- ▶ The peruvian management of the natural resource has been internationally recognized. The peruvian anchovy biomass has been well preserved and has been exclusively been affected by oceanographic phenomena

▶▶ Peruvian Anchovy Biomass Center -North Region – Summer Cruise 2006-2021 (Millions of MT )



Source : IMARPE

Each vessel has an unchanging assigned fishing quota. Moreover, the Government sets the juvenile catch rate limit. This limit has never been exceeded.



# We are TASA



# Our fishmeal process



We guarantee  
**tomorrow's**  
**NUTRITION**

