

---

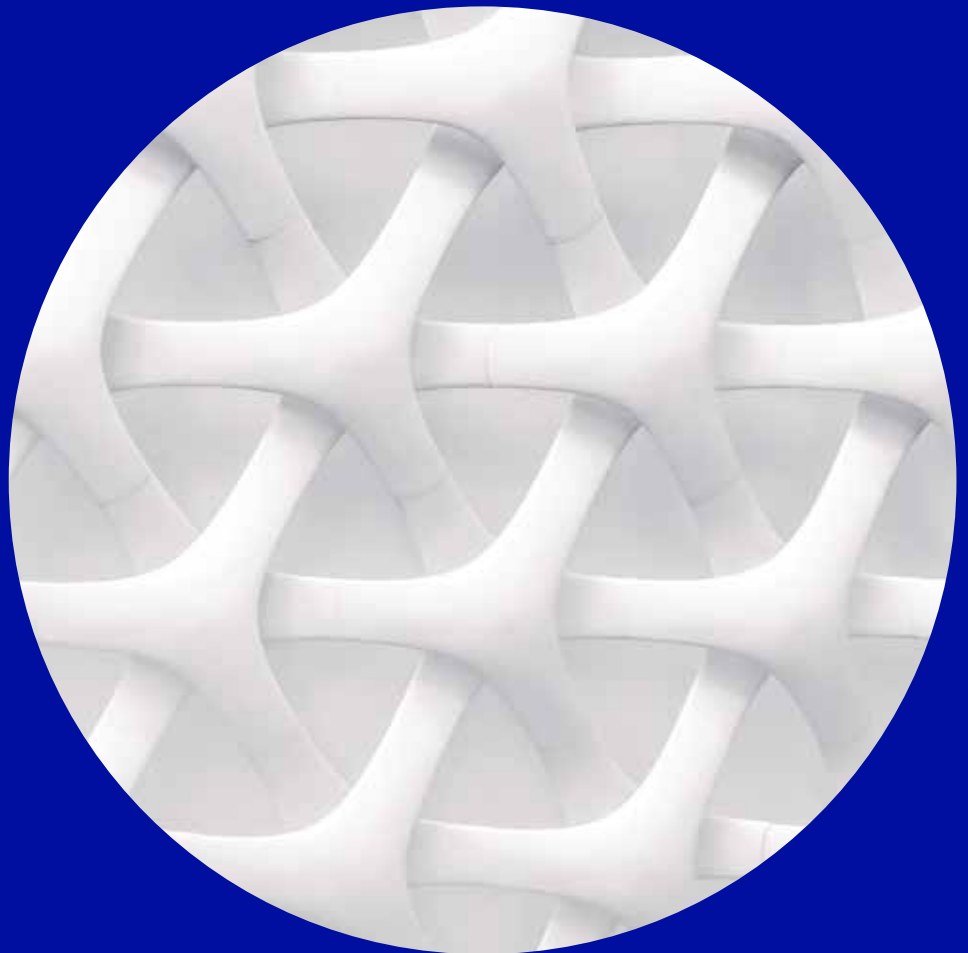
# Chronic diseases management platform

---

transforming data into  
information for better home  
monitoring

---

Product Sheet



# Three global trends to understand the future of health



In this paradigm, for health systems to withstand the increased demand, it is necessary to invest on an active and “disease-free” population, with a greater focus on healthy lifestyles and disease prevention. In this perspective, there is an expectation of transition from treatment-focused care to disease prevention and health promotion. To this end, it is essential to engage people in the management of their health based on access to relevant information, implement different strategies of involvement and digitalization, enhancing the control by the citizen.

The domiciliation of care and the collection of clinically relevant data through telemonitoring systems gains weight in the set of interactions that the citizen has with health care. The imbalance caused by the increase in demand, associated with the scarcity of human resources makes room for the development of solutions to support clinicians, freeing them from some tasks and helping them in others.

Solutions that were previously limited by technical issues are now possible to be implemented due to the development of data processing capacity. In addition to this increased capacity, there is a profusion of piecemeal and specific solutions, based on apps and technological platforms available to users, but still to be integrated. According to a PwC study, there will be more than 165,000 mobile health applications available, 40% of them with less than 5,000 downloads; 16% of consumers surveyed in a global scale study say they already have a health monitoring device, and 31% say they plan to get one. It should also be noted that nowadays it is not enough to develop applications and devices, but to create an entire surrounding ecosystem. Citizens and patients, as consumers, are ready to make this transition.



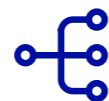
## Demography

Across the world, we are witnessing an inversion of the demographic pyramid. Having an aging population means more chronic disease and increased health expenditure



## Human resources in health

According to the World Health Organization and the World Bank, in 2030 the world will have less 18 million healthcare professionals than expectedly needed



## Technology

The last few years have seen remarkable advances in areas such as artificial intelligence, ability to store and process data, or to create devices that amplify the potential for collecting health data



# Healthcare Providers are facing a new challenge

chronic diseases  
*epidemia*

33%



Over 1/3 of the European population above the age of 15 has a chronic disease

77%



In Europe, chronic illnesses are by far the leading cause of mortality, representing 77% of all deaths

20%



Nearly 20% of chronic disease patients are readmitted in a 30 days time period to hospitals in Europe

60%



60% of homecare visits are attributed to chronic diseases

80%



The treatment of chronic diseases accounts for almost 80% of total healthcare spending



# Chronic diseases management pains

To achieve efficient chronic disease management, health systems, clinicians and patients feel several pains such as:



Time consuming processes



Need for lots of clinical appointments



High number of allocated resources



Suboptimal acute events control



High costs per patient







# Efficient chronic disease management solution

A platform for continuous disease management for more quality of care with less effort and costs and the ability to generate alerts for clinicians, patients and informal caregivers.



---

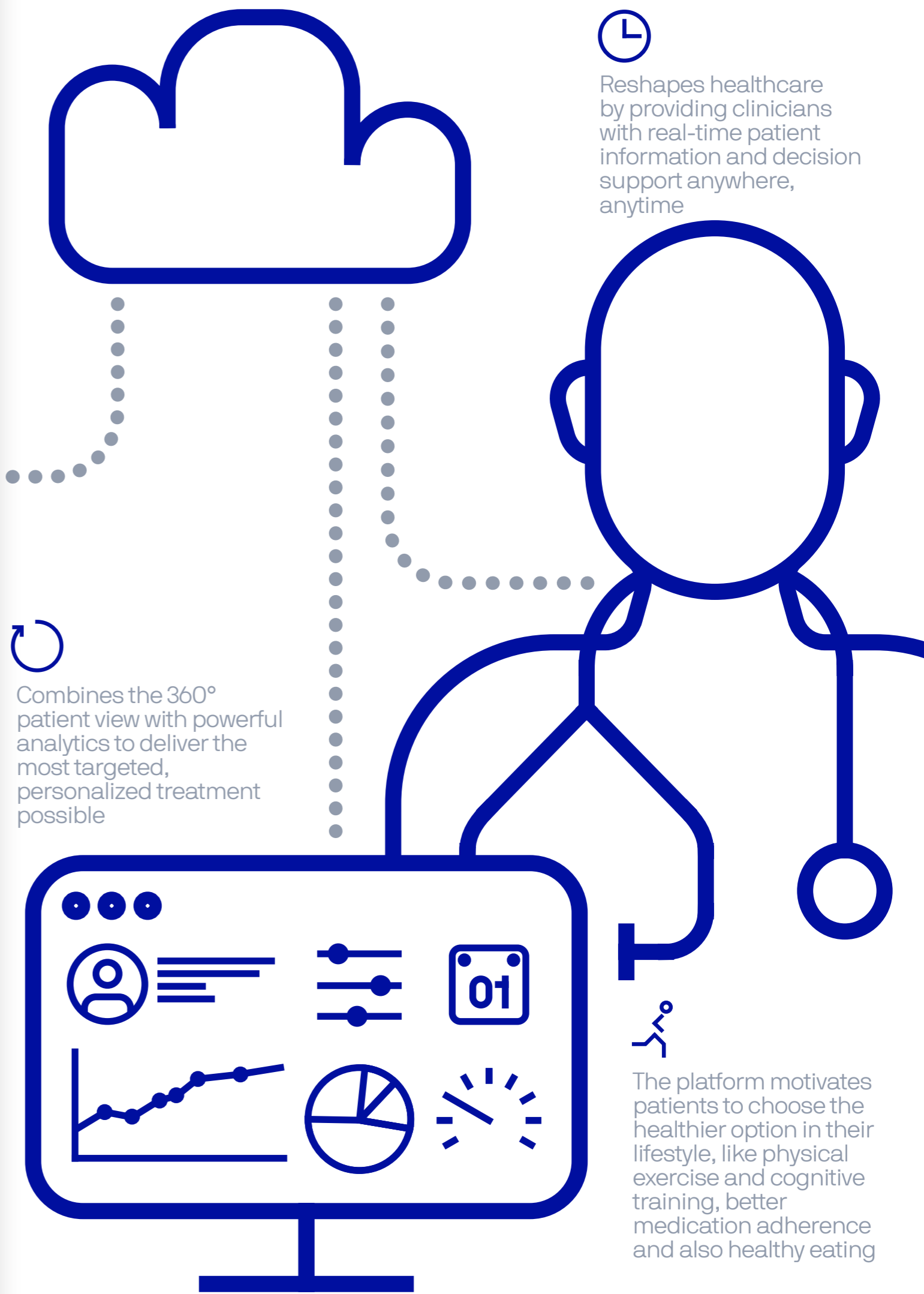
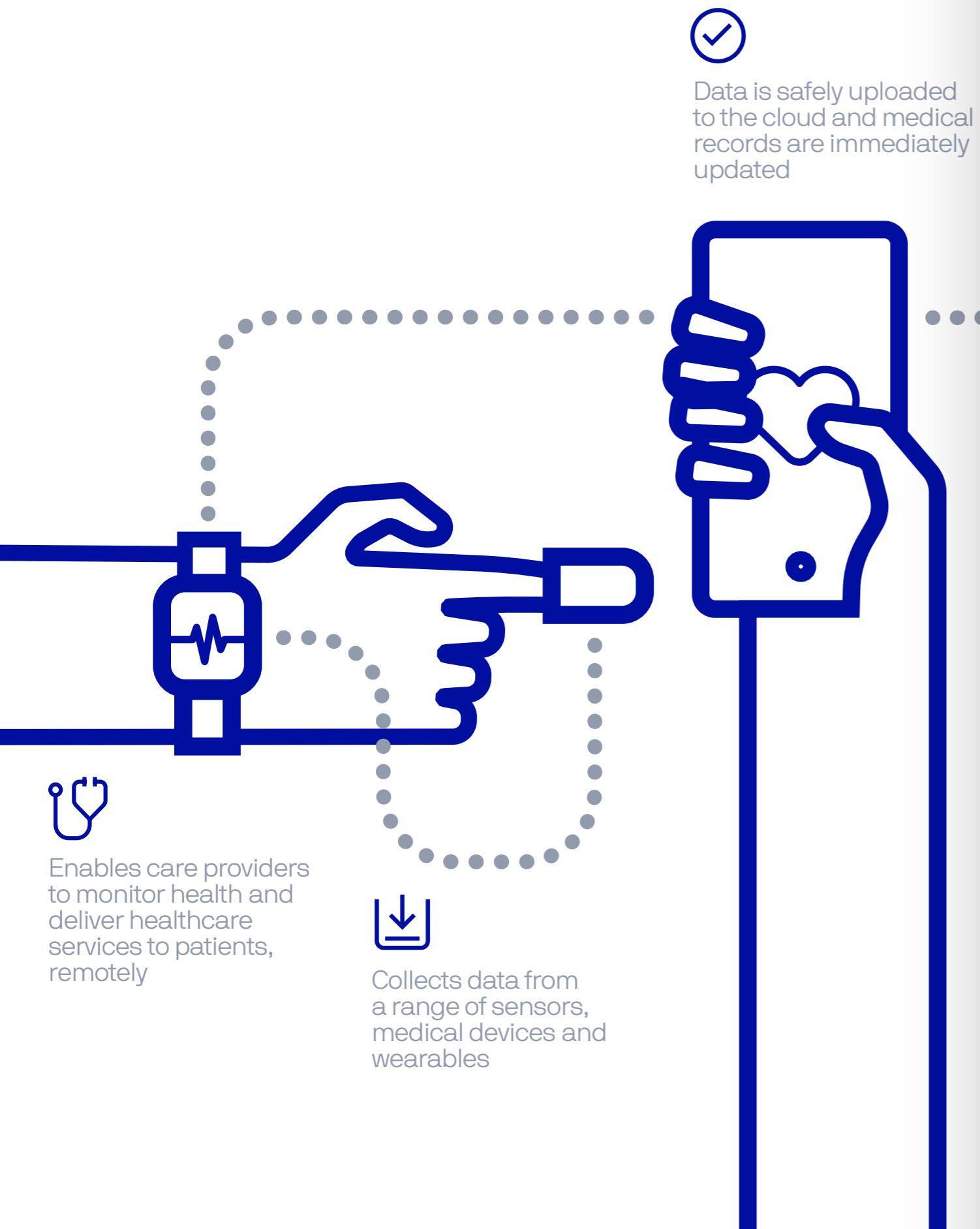
# A platform that streamlines person-centered care with intelligent chronic disease management

---

To be used by care providers and patients, this customizable platform streamlines person-centered care with intelligent chronic disease management workflows, data integration, broad-spectrum collaboration, patient engagement, and configurable analytics and reporting.



# Platform description



# Features



Real-time monitoring of disease specific physical and neurologic parameters



Medication management and compliance



Eating management and diet compliance



Neurologic stimulation and evaluation



Patient educational materials and tools



Data integration with a 360° patient view



Data dashboard per patient



Customizable alerts for clinicians, patients and informal caregivers by patient and by population for clinical evaluation



Customizable analytics by patient and by population for clinical evaluation

# Benefits



Reduce patient readmissions



Reduce post-hospitalization complications



Reduce homecare visits



Improve patient quality of life



Contribute to a more efficient and more effective healthcare ecosystem



---

## Partners



---

## Co-financed by



---

For more information  
about this product:

---

Joana Feijó · [jfeijo@healthportugal.com](mailto:jfeijo@healthportugal.com)  
+351 934310362

